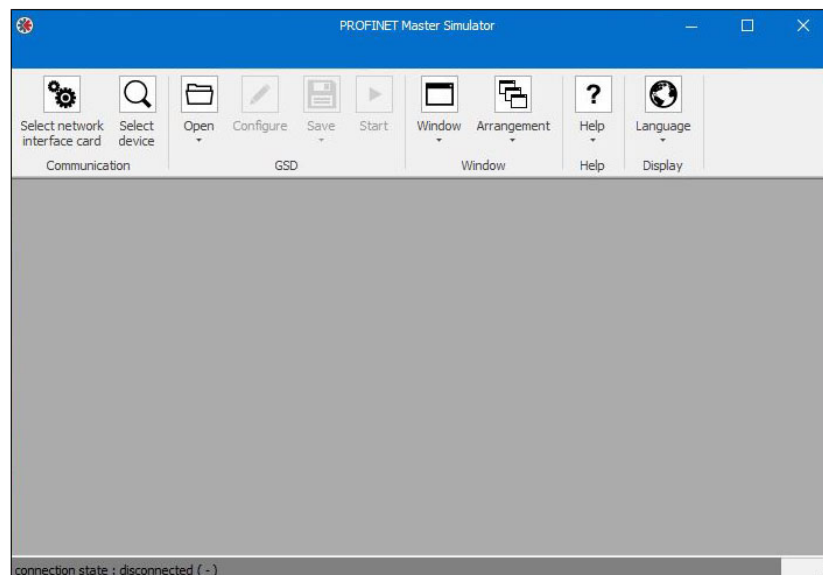


INpact Slave PCIe

How to Use the PROFINET Master Simulator

STARTUP GUIDE

4.02.0320.20001 1.1 en-US ENGLISH



Important User Information

Disclaimer

The information in this document is for informational purposes only. Please inform HMS Industrial Networks of any inaccuracies or omissions found in this document. HMS Industrial Networks disclaims any responsibility or liability for any errors that may appear in this document.

HMS Industrial Networks reserves the right to modify its products in line with its policy of continuous product development. The information in this document shall therefore not be construed as a commitment on the part of HMS Industrial Networks and is subject to change without notice. HMS Industrial Networks makes no commitment to update or keep current the information in this document.

The data, examples and illustrations found in this document are included for illustrative purposes and are only intended to help improve understanding of the functionality and handling of the product. In view of the wide range of possible applications of the product, and because of the many variables and requirements associated with any particular implementation, HMS Industrial Networks cannot assume responsibility or liability for actual use based on the data, examples or illustrations included in this document nor for any damages incurred during installation of the product. Those responsible for the use of the product must acquire sufficient knowledge in order to ensure that the product is used correctly in their specific application and that the application meets all performance and safety requirements including any applicable laws, regulations, codes and standards. Further, HMS Industrial Networks will under no circumstances assume liability or responsibility for any problems that may arise as a result from the use of undocumented features or functional side effects found outside the documented scope of the product. The effects caused by any direct or indirect use of such aspects of the product are undefined and may include e.g. compatibility issues and stability issues.

1 Preparation

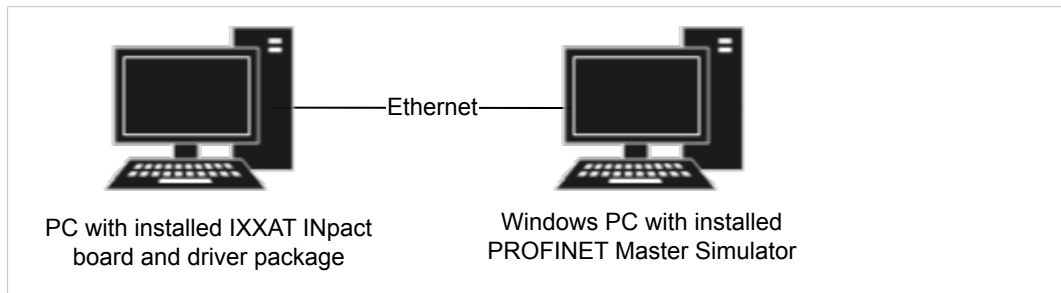


Fig. 1 Hardware setup

- ▶ Make sure that the appropriate GDSML files are available (available from HMS, e.g. for Mini or Standard version).
- ▶ Install the INpact interface and the appropriate driver (available on www.ixxat.com/support) on a Windows PC.
- ▶ Install the PROFINET Master Simulator on another Windows PC (for more information see www.anybus.com).
- ▶ Connect the PC with installed PROFINET Master Simulator with the INpact interface via Ethernet.
- ▶ To start the INpact demo, open `C:\Users\Public\Documents\HMS\Ixxat INpact\Samples\IDL\bin\x64` (or `x32`) and run `IDLc_TestApp.exe`.
 - The INpact interface is initialized and in state `WAIT_PROCESS`.



The screenshot shows a command prompt window titled 'C:\Users\Public\Documents\HMS\IXXAT INpact\Samples\IDL\bin\x64\IDLc_TestApp.exe'. The output of the application is as follows:

```
RSP ABP_NW_IA_NW_TYPE_STR:
Network type string: PROFINET IRT
PD Mapping
ADI < 0 > got
mapped write ADI
ADI < 1 > got
mapped read ADI
ADI < 2 > got
mapped read ADI
ADI < 3 > got
mapped write ADI
ADI < 4 > got
mapped read ADI
SET IA_READ_PD_SIZE:
4
SET IA_WRITE_PD_SIZE:
4
SET ANB_IA_SETUP_COMPLETE:
OK
ANB_STATUS: ABP_ANB_STATE_NW_INIT

APP_STATUS: APPL_RUN
ANB_STATUS: ABP_ANB_STATE_WAIT_PROCESS
```

Fig. 2 INpact demo

2 PROFINET Master Simulator

- ▶ Start the PROFINET Master Simulator.
- ▶ Click **Select network interface card**  in the tool bar and select the network interface in use.
- ▶ Click **Select device**  in the tool bar.
 - Dialog **Device Management** is opened.

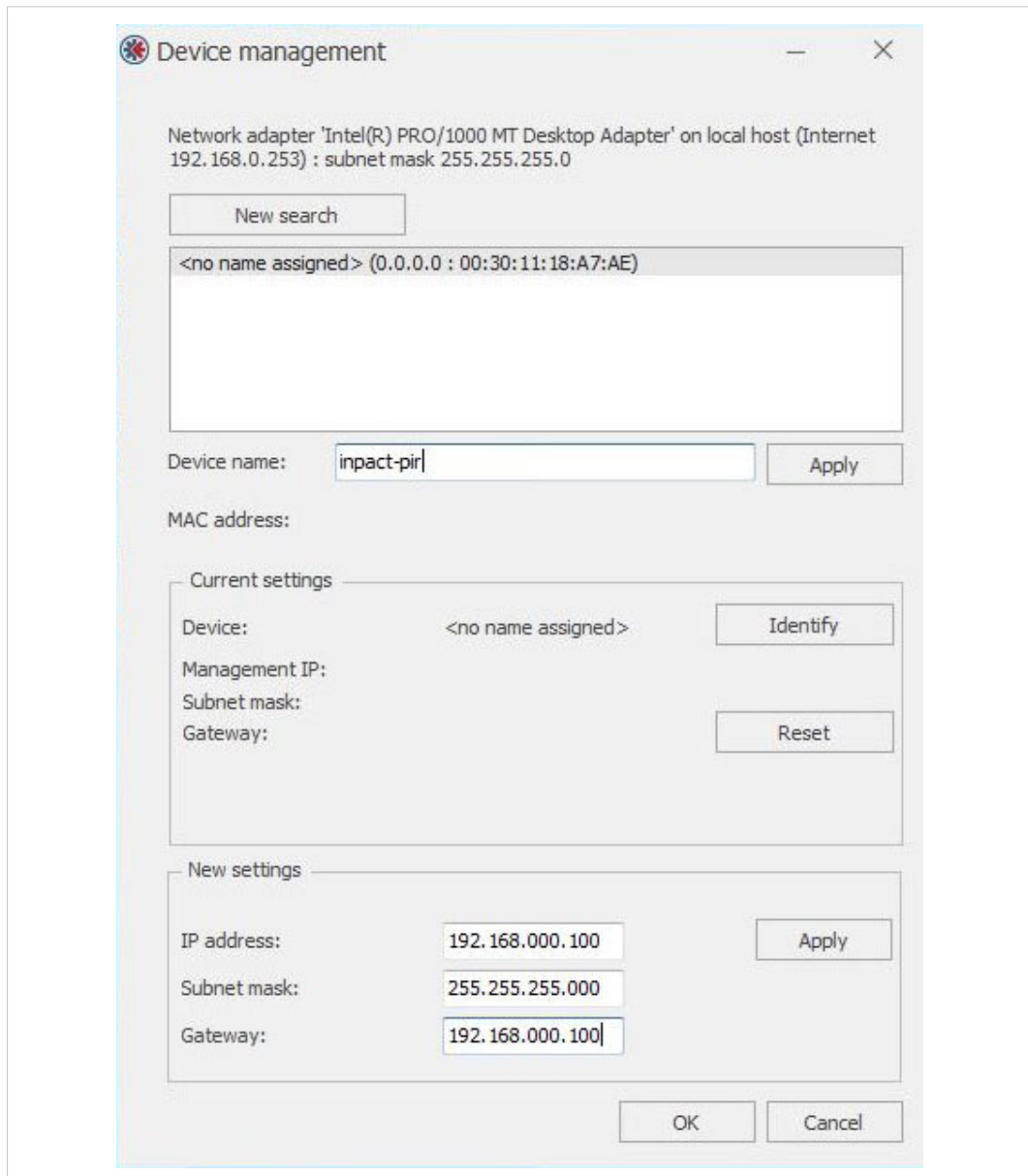





Fig. 3 Device Management

- ▶ To search for the INpact interface click **New search**.
- ▶ If no name is assigned to the INpact interface, enter a name in field **Device name** and click **Apply**.
- ▶ Select the INpact in use.

- ▶ Enter the **IP address** and the **Subnet mask** of the INpact interface and the **Gateway** address of the network interface.
- ▶ Make sure, that INpact interface and network interface are located in the same IP address domain (IP and subnet).
- ▶ Click **Apply** and **OK**.
 - Dialog **Device Management** is closed.
- ▶ Click **Open**  and select the appropriate GSDML file.
- ▶ Click **Configure**  and select desired data and slots.
- ▶ To start the Simulator, click **Start** .
 - List of process data is created.
 - INpact interface is in state PROCESS_ACTIVE.
- ▶ To modify the data in the Simulator, open tab **I/O process data, structured view**.

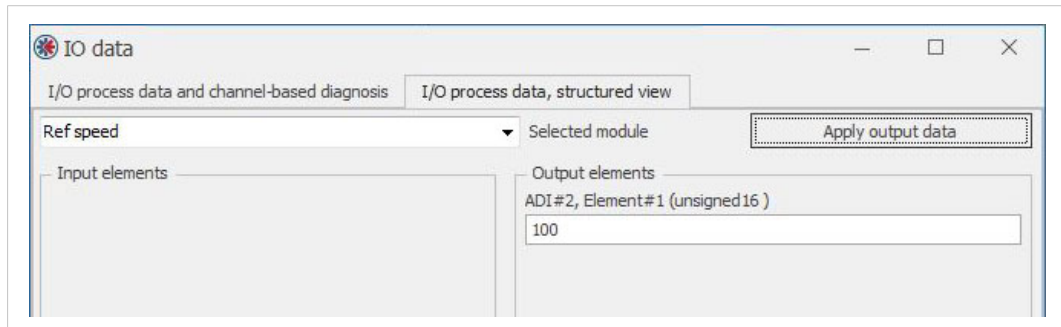


Fig. 4 I/O data

